



Product Model: LP135F07

Product Specifications

Product Specifications



Product Features

- ✧ Built-in high-performance processor, 8-core CPU + 4-core GPU
- ✧ Android 13.0 system, 4GB RAM + 64GB ultra-large storage
- ✧ Ultra-narrow bezel design, with 6mm bezels on top, bottom, left and right.
- ✧ Support wireless Screen Sharing Function
- ✧ WiFi 6, AP and STA modes, and WiFi 6 dual-band 2.4G/5G are available
- ✧ Supports Bluetooth 5.3
- ✧ Two HDMI input
- ✧ Supports various scene modes for different application scenarios
- ✧ Overall standby power consumption $\leq 0.5W$
- ✧ Fully front access and hot swapping available
- ✧ Supports adjustment modes via Wi-Fi, network cable and USB connection
- ✧ Built-in RS232(RJ45) interfaces can realize remote centralized control function
- ✧ All-in-one ultra-slim and lightweight design. 31mm Thickness and 4kg/Cabinet.
- ✧ Meets the EU RoHS directive requirements

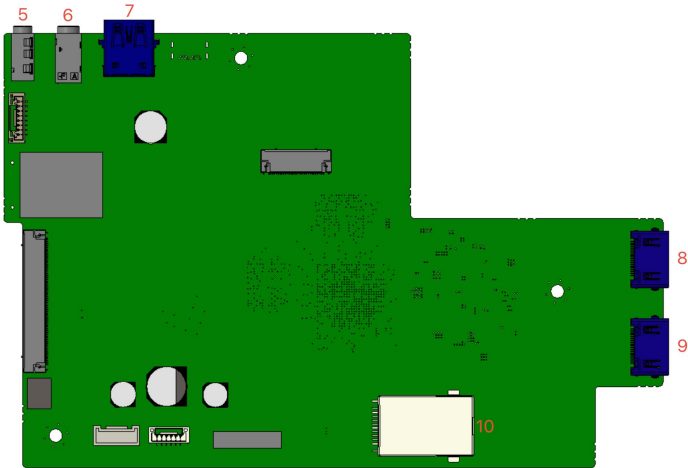
Product Parameters	
Size	135 inch
Aspect Ratio	16:9
Resolutions & Pixel Pitch	1920×1080 1.5 mm
Overall Size (L×H)	3012×1699.5mm
Display Area (L×H)	3000×1687.5mm
Screen thickness	31mm
Overall thickness	48.1mm
Net Weight	100kg(wall-mounting bar and stand not included)
Recommended Viewing Distance	≥10.5 ft
Maintenance Mode	Front Access
Installation Mode	Stand, Wall-mounting,and ceiling mounting
Optical Parameters	
Brightness	100~600cd/m ² (Adjustable)
Refresh Rate	1920/3840Hz
Gray Scale	13bit
Contrast	6500:1
Color Temperature	2300~9300K(Adjustable)
Viewing Angle	Horizontal 160°, Vertical 140°
Electrical Parameters	
Operation Voltage	100~240VAC 50/60Hz
Standby Power	≤0.5W
Average Power Consumption of	0.623KW

Overall Unit	
Maximum Power Consumption of Overall Unit	1.87KW
System Parameter	
Operating System	Android 13.0
CPU	Four Cortex-A76+ four Cortex-A55, frequency 2.4GHz
RAM	4GB
Storage	64GB
Media Formats	<p>Supports mainstream video format such as MPEG-1,MPEG-2,MPEG-4,H.263,H.264,H.265,VC-1,VP9,VP8,MVC,AV1;</p> <p>Supports audio formats such as MP3;</p> <p>Supports JPG, JPEG, BMP, PNG, GIF and other image formats.</p>
Environmental Parameter	
Operation Temperature	-10℃~40℃
Operation Humidity	10%~80%RH No condensation








I/O Ports

Type	QTY
HDMI IN	2
USB 3.0	2 (One inside and one outside)
3.5 Audio Output	1
RS232(3.5mm interface)	1
LAN	1

*USB 3.0 output power: 2.5W.



NO.	Description	NO.	Description
1	USB3.0	6	AUDIO OUT
2	IR	7	USB3.0
3	dual-color indicator light(red/blue)	8	HDMI2.0 input
4	Standby/Wake up button,	19	HDMI1.4 input
5	RS232	10	WAN

Introduction to remote control		
Button Icon	Functions	
	Standby/Wake up	
	Up	
	Down	
	Confirm	
	Left	
	Right	
+	Volume Up	
-	Volume Down	
	Back	
	Brightness Adjustment	
	Menu	
	Main Interface	

Accessories	
Descriptions	Quantity
Remote Control	1
Front Maintenance Tool	1
Tool kit	1
Wall-mounting Bar	1
Standing Accessory	1 set (optional)

Packing Dimensions		
Wooden case packing		
Item	Dimensions	Quantity
Packing Dimensions	1980×1000×1075mm	1
Carton packing		
Item	Dimensions	Quantity
Cabinet Packing Dimensions	1850×705×240mm	3
Module Packing Dimensions	795×445×165mm	5
Accessories Packing Dimensions	795×445×165mm	1
Wall-mounting Bar Packing Dimensions	1860×175×140mm	1

Note:

- ◆The content of this specification may be adjusted and revised in real time without prior notice to provide as accurate specification parameters as possible.
- ◆This product is an indoor product. It is strictly prohibited to use it in direct sunlight.
- ◆In order to ensure long-term and more uniform display effect, do not play fixed images for an extended time.
- ◆For enhanced safety, it is advisable to switch off the LED display using either the designated button or the remote control before unplugging the power.

Special Statements

- ◆ Intellectual Property Rights: The hardware design and software programs of this product are protected by copyright. The contents of this product and the manual shall not be copied without the authorization of the company.
- ◆ The contents of this manual are for reference only and do not constitute a commitment of any kind.
- ◆ The company reserves the right to make improvements and changes to the product design without prior notice
- ◆ Note: HDMI, HDMI HD Multimedia Interface and HDMI logo are trademarks or registered trademarks of HDMI Licensing LLC in the United States and other countries.