

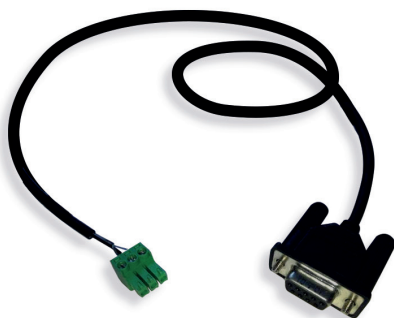
Thank you for purchasing a Luxi Electronics product with RS-232 feature. This setup guide will guide you through the setup of the RS-232. Because the RS-232 cables and terminal software are third party products, we cannot cover all the variety of the products you may use, we'll do our best to use the most common the products as examples here and hopefully it can help you with your slightly different products too.

All Luxi products use 3-pin 3.5 mm captive screen connectors for RS-232 port. The pin configurations are uniformed as:

Pin 1 = Tx; Pin 2 = Rx; Pin 3 = Ground

The pins are counted from left to right when the female connector on the Luxi device is facing the user. You need to source a cable with one end to match the RS-232 connector type on your control host side. Every Luxi product with RS-232 comes with a 3-pin male captive crew plug in the package, so you do not need to care what connector on the other side. Start by cutting off the connector at the other end and removing the outer insulation. Then **strip off exactly 5mm of inner insulation** from each of the 3 individual wires inside. Securely terminate them into the provided captive screw plug by loosening the screws, inserting the wires, tightening the screw, whilst making sure that there are no short circuits or loose wires.

Type 1: 9-pin D-sub connector to 3-pin captive screw connector cable

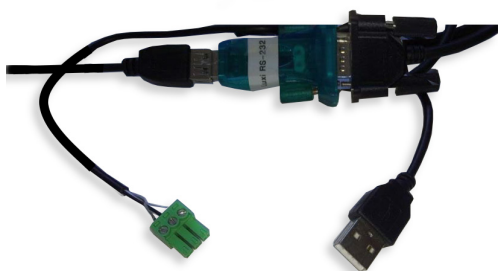


The 9-pin D-sub connector is most commonly seen on desktop PCs or controllers, also known as "serial port". The pin numbers are usually molded on the connector. You only need to connect 3 of the 9 wires of the D-sub connector:

Pin 2 = Tx
Pin 3 = Rx
Pin 5 = Ground

Note: Please connect the pins with the identical names of the Luxi 3-pin captive screw plug - e.g. Tx to TX and RX to Rx, etc.

Type 2: USB to 3-pin captive screw connector cable



The USB connector is most commonly seen on laptop computers. There's an electronics circuit board in between and it comes with a USB driver for that circuit. Please load the driver to the laptop first. Regardless what connector is on the opposite side, follow the instructions above to cut off, strip and screw on the 3 wires to the provided 3-pin captive screw plug.

Type 3: Mini (TRS) to 3-pin captive connector cable

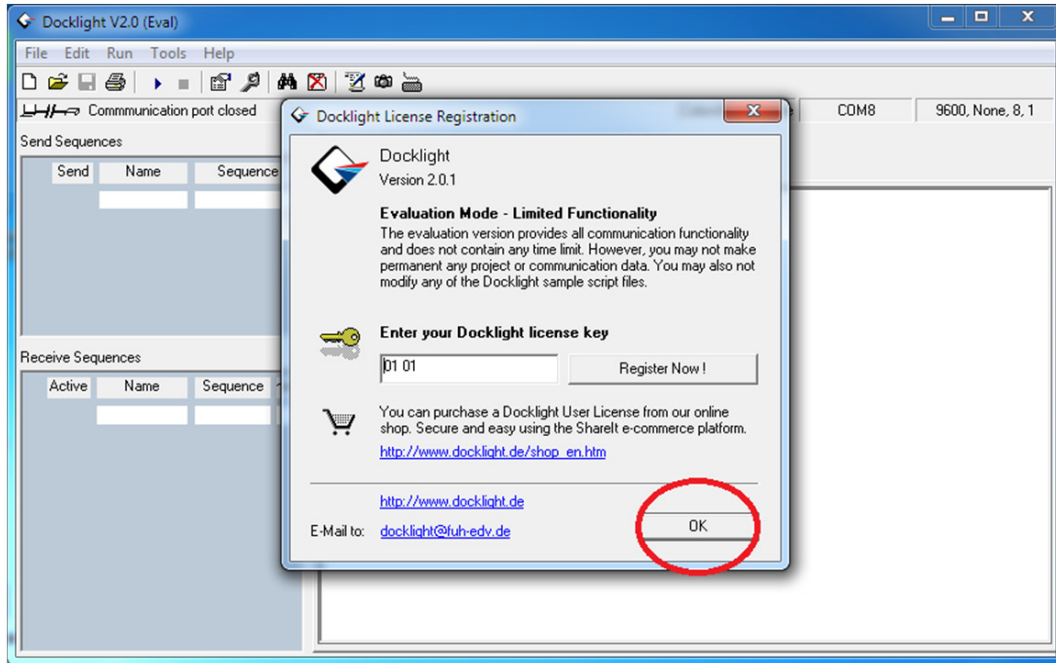


The mini (also called TRS) connector is less commonly used; it appears on some controllers for the consumer electronics market. Here are the pin configurations:

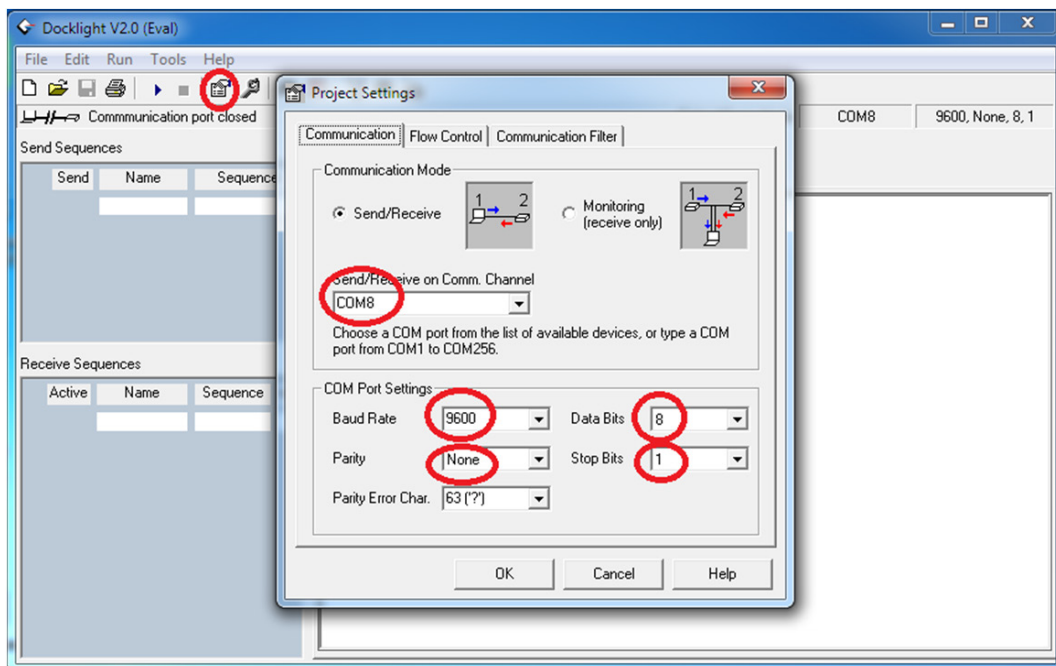
Tip = Tx
Ring = Rx
Sleeve = Ground

Note: Please connect the pins with the identical names of the Luxi 3-pin captive screw plug. A female mini TRS is shown in the picture. You'll need another common mini TRS to mini TRS audio cable to connect this cable to the host. You can also use a cable with male mini plug and terminate the other end with the captive screw plug and only use this cable for the connection.

Here's the startup screen of the program "Docklight"; choose "OK" for a free trial usage.

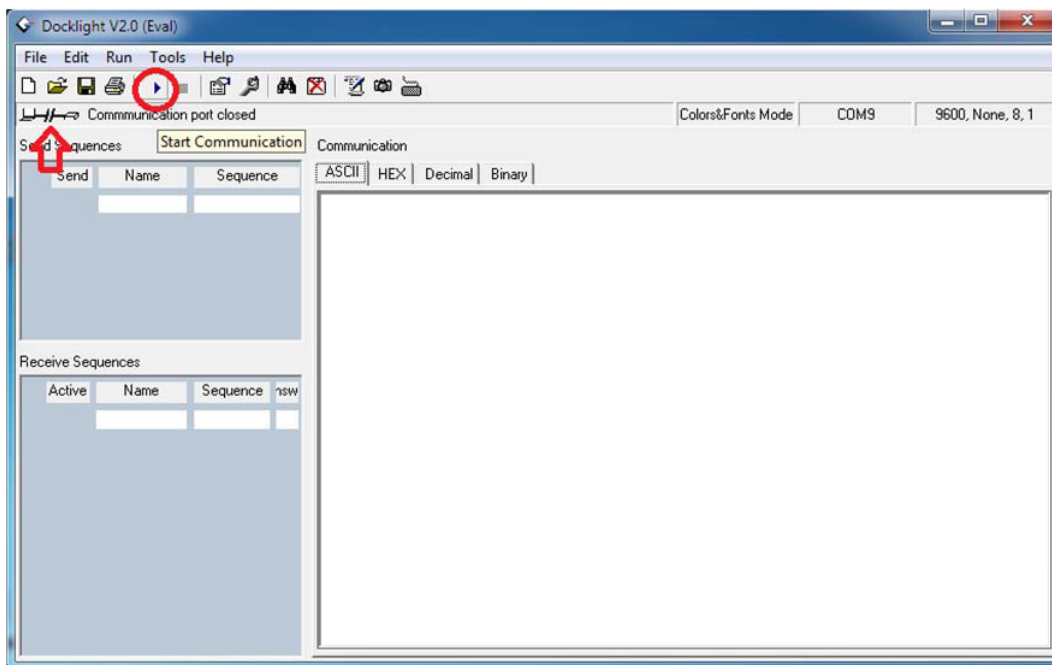


After this screen, click "Continue" on the next screen. Next, click the "Project Setting" icon on the top tool bar (red circled), it will open a new window. Next, the communication port must be set up. Normally, there will be two ports available in the drop down menu. Pick the port with the higher number for now. (If it does not work in the next steps, come back here to change to

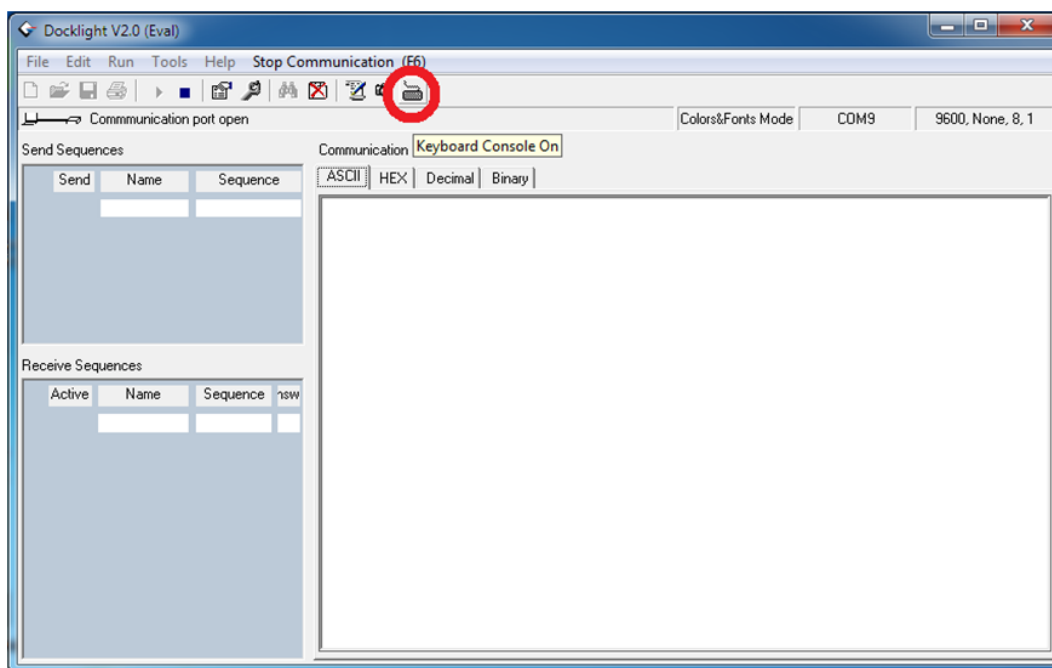


the other port). Then change the other four parameters to the exact settings as in the 4 red circles, which we normally call which we normally refer to as 9600, 8-N-1 settings. Note: Luxi products only support these settings. Click "OK" when done.

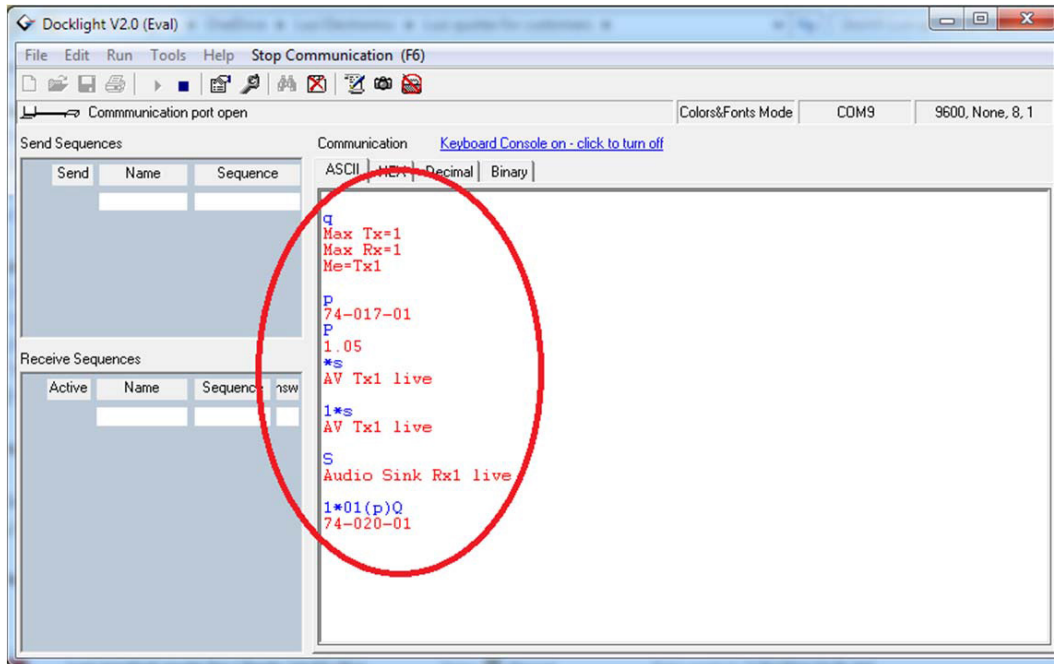
Next click the "Start Communication" icon on the top tool bar (red circled), you'll see the broken link between devices on the top left illustration become a linked line (Red arrow).



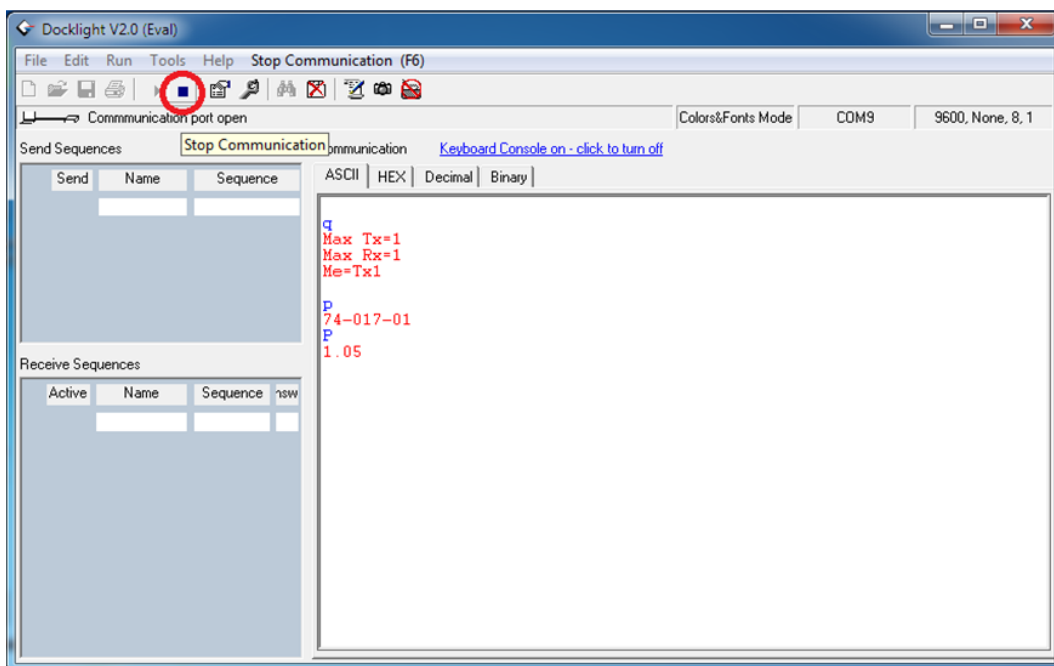
Then click on the "Turn On Keyboard" icon on the top tool bar (red circled) to enable keyboard.



Now the RS-232 controls should be fully functional. See the commands and responses in this screenshot. The locally typed in commands are in blue text while the responses are in red. Do NOT hit "Enter" after each command. Luxi RS-232 commands do not have "Enter" (line return) so multiple commands can be sent in a long string without pauses. This is very important for sending multiple strings to a matrix switcher.



Most responses have line return by itself, so the next text appears on the next line. But some pass through commands do not have line return due to the compatibility with the 3rd party devices, so the response text may be in the same line as the previous command text. This is normal. After the control session, click the "Stop Communication" icon on the top tool bar, close Docklight program if desired. Choose not to save project because the free trial version does not support saving a project.



If you need any additional support, please contact PureLink GmbH in Germany.
Thank you for choosing Luxi products.