

# PRESENCE WALL/FLOOR MOTORIZED UPDATE 2021



## Pump up

### New options with Dark Grey and rotatable mount

Updated and improved!

SMS Presence Wall/Floor Motorized has a new elegant color option - Dark Grey, and a brand new mounting option, a Flipster rotatable mount for interactive displays that are able to switch between landscape and portrait orientation.

Just as before, SMS Presence Wall/Floor Motorized makes it easy to mount large and heavy displays on regular walls. The smart design shifts the weight to the floor.

Installation is quick, easy and stylish. A perfect support in the lobby area or conference room. Furthermore, the stand itself uses very little floor space and is perfect in small spaces where a bracket with legs would be in the way.

Everyone can reach thanks to the soft motorized height adjustment. The SMS Presence Wall/Floor Motorized is extensively pre-mounted for easy installation.



#### ARTICLE NUMBER

K05-142-22

SMS Presence W/F Motor 600x400 EU DG

#### INCLUDED PRODUCTS

SMS Presence W/F Motor Covers DG

1 x 05-031-2

MultiMount PRO 64 A/DG

1 x 03-009-6

SMS Presence W/F Motor Body 150

1 x 05-018-21

#### INFO

<b>PLACEMENT</b>	Wall/Floor
<b>MOTORIZED</b>	Yes
<b>LOCKABLE</b>	Yes
<b>HEIGHT ADJUSTABLE</b>	Yes
<b>HEIGHT ADJUSTABLE SPEC</b>	500
<b>CERTIFICATES</b>	CE
<b>VESA HORIZONTAL</b>	200 - 600
<b>VESA VERTICAL</b>	200 - 400
<b>MAX WEIGHT [KG]</b>	150
<b>SCREEN SIZE</b>	98"
<b>WARRANTY [YEARS]</b>	2

# PRODUCT VARIATIONS

**K05-143-22 - SMS PRESENCE W/F MOT OR 1000X600 EU DG**

---

**K05-146-22 - SMS PRESENCE W/F MOT OR FLIPST ER DG**

---

**K05-142-22 - SMS PRESENCE W/F MOT OR 600X400 EU DG**

# ACCESSORIES



## **PRESENCE CAMERA SHELF**

PR100001



## **REMOTE CONTROL KIT**

AE018002

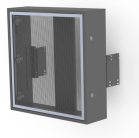


## **SMS PRESENCE SHELF - WALL/FLOOR**

PR100004-P0

## **SMS PRESENCE SHELF - MOBILE**

PR100002-P0



## **SMS PRESENCE TOWER BOX - WALL/FLOOR**

C5-21U004-2-A

## **SMS PRESENCE TOWER BOX - MOBILE**

C5-21U006-2-A